

# swisstech.

## PRESS KIT

### AI & ROBOTICS

Algorized  
csky.ai  
Loxo  
Modulos

### AR | VR | XR

Argos Inspection & Technologies

### CYBERSECURITY

Brightside AI  
Duokey  
Global ID  
Sharekey

### CLEANTECH

Cowa Thermal Solutions  
Droople  
Enerdrape  
Green-Y Energy  
Medusoil  
novoMOF  
Perovskia Solar  
qCella

### ICT

Beekee  
Innopearl

### HEALTHTECH

Alveolix  
Augmedi  
Bewe  
Emovocare  
Leg&airy  
Mynerva  
Onescope  
Precisia Care  
Rea Diagnostics  
Resmonics  
Veltist  
Watchibia

### HEALTHTECH ECOSYSTEMS

CSEM  
DayOne  
Future of Health Grant  
Genolier Innovation Hub  
Switzerland Innovation West EPFL  
Wyss Zurich



# ALGORIZED



## LOOKING FOR

INVESTORS  
PARTNERS  
CUSTOMERS

## FUNDING

SEED

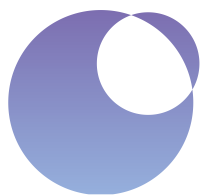
## PRODUCT DESCRIPTION

Founded on extensive academic research, Algorized enables groundbreaking sensing and positioning applications through a software-only upgrade to existing commodity sensors. The platform leverages proprietary machine learning algorithms to access a wealth of data from UWB radar and wireless sensors, facilitating real-time positioning and vital sign detection in any environment. The company is pioneering innovative solutions for sectors ranging from automotive to human-machine interaction in robotics.

## CONTACT

Natalya Lopareva  
CEO  
[natalya@algorized.com](mailto:natalya@algorized.com)





# csky.ai



## LOOKING FOR

PARTNERS  
CUSTOMERS  
INVESTORS

## FUNDING

SEED  
SERIES A

## PRODUCT DESCRIPTION

ClearMind by csky.ai is an offline AI assistant that transcribes, summarizes, and generates reports entirely on-device—ensuring absolute data privacy and compliance. Designed for sensitive sectors like finance, healthcare, and government, it combines advanced speech recognition, natural language processing, and edge computing to deliver secure, real-time meeting intelligence without cloud dependency.

## CONTACT

Joséphine Berthier  
Business Operation Manager  
[josephine.berthier@csky.ai](mailto:josephine.berthier@csky.ai)





---

## LOOKING FOR

RETAILERS  
TALENTS  
PARTNERS

## FUNDING

SERIES A

---

## PRODUCT DESCRIPTION

At LOXO, we are redefining last-mile logistics with LOXO Digital Driver, our cutting-edge autonomous driving software. As the first company to operate L4 autonomous deliveries on European public roads, we seamlessly integrate into existing logistics networks, reducing costs, emissions, and dependency on drivers.

Our hardware-agnostic software ensures safe and efficient operations, enabling sustainable and scalable urban deliveries. Backed by strategic partnerships with industry leaders, we are not just developing autonomous technology in Europe—we are making Europe the global hub for autonomous logistics.

---

## CONTACT

Lara Amini  
Co-Founder & CBO  
[lara@loxo.ch](mailto:lara@loxo.ch)





# modulos



## LOOKING FOR

PARTNERS  
CUSTOMERS  
INVESTORS

## FUNDING

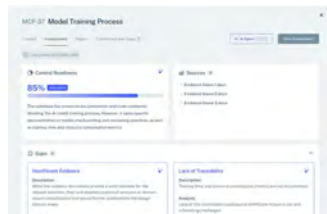
SEED

## PRODUCT DESCRIPTION

Modulos is redefining AI governance by introducing AI Agents that autonomously manage compliance, risk, and governance (GRC) processes. Unlike traditional GRC solutions that rely on static rule-based systems and manual oversight, our AI Agents proactively assess risks, adapt governance workflows in real-time, and provide contextual compliance recommendations. This automation drastically reduces the complexity and inefficiencies of AI governance, making compliance both scalable and dynamic.

## CONTACT

Laura Ferrari  
Marketing Lead  
[laura.ferrari@modulos.ai](mailto:laura.ferrari@modulos.ai)





---

## LOOKING FOR

INVESTORS  
PARTNERS

TALENTS  
CUSTOMERS

## FUNDING

SERIES A  
SERIES B

---

## PRODUCT DESCRIPTION

Argos uses advanced IoT sensors, drones, and 3D SLAM scanners to provide real-time monitoring of stored commodities. Our wireless, multi-sensor devices track volume, temperature, moisture, and CO<sub>2</sub> levels, while data is visualized through a secure cloud platform. This technology enables accurate inventory control, early risk detection, and remote access for stakeholders, making Argos a trusted solution for modern commodity monitoring.

---

## CONTACT

Gennadiy Shulga  
CEO

[gennadiy.shulga@argositech.com](mailto:gennadiy.shulga@argositech.com)





# BRIGHTSIDE



## LOOKING FOR

INVESTORS  
PARTNERS  
CUSTOMERS

## FUNDING

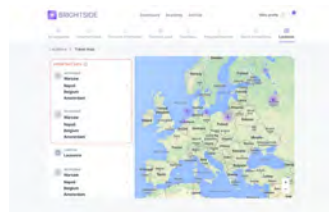
PRE-SEED

## PRODUCT DESCRIPTION

Brightside AI makes your employees resilient to social engineering attacks by turning cybersecurity into a personal mission. How do we do that? We scan each employee's digital footprint to uncover exposed data and use it to tailor realistic simulations—from phishing emails to advanced vishing and deepfake scenarios. Alongside training, we equip employees with personal security tools to help them reduce their online exposure (their digital footprint)—because when people care, cybersecurity works.

## CONTACT

Andrey Lazarev  
Co-Founder, COO  
[al@brside.com](mailto:al@brside.com)





---

## LOOKING FOR

INVESTORS  
CUSTOMERS  
RETAILERS

PARTNERS  
TALENTS

## FUNDING

SERIES A

---

## PRODUCT DESCRIPTION

DuoKey is a leading provider of enterprise cloud and data security, specialising in data protection and AI. The company focuses on multi-cloud encryption key management, confidential AI, and Post-Quantum Cryptography (PQC), enabling organisations to leverage cloud and AI capabilities securely and confidently with secure Multi-Party Computation (MPC) and Fully Homomorphic Encryption (FHE).

---

## CONTACT

Nagib Aouini  
CEO  
[nagib.aouini@duokey.ch](mailto:nagib.aouini@duokey.ch)







# GLOBAL ID



## LOOKING FOR

INVESTORS  
PARTNERS  
CUSTOMERS

## FUNDING

PRE-SEED  
SEED

## PRODUCT DESCRIPTION

Private biometric authentication for healthcare, sovereign security institutions, federal, national, cantonal, local public offices, blue lights, high-security financial and precious material environments for NIST Zero Trust policy. Next gen multi-view finger vein recognition technology can now be added to any application via simple APIs. Secure by design: cannot be stolen or lost, passwordless, phishing resistant, spoofing resistant, duress resistant, highest usability and confidence.

## CONTACT

Riccardo De Filippo  
Operations  
[riccardo.defilippo@globalid.swiss](mailto:riccardo.defilippo@globalid.swiss)





# Sharekey®



## LOOKING FOR

INVESTORS  
RETAILERS  
CUSTOMERS

PARTNERS  
TALENTS

## FUNDING

SERIES A

## PRODUCT DESCRIPTION

SHAREKEY is the Swiss Collaboration app, sovereign, private and eco-friendly, that secures Business Privacy. All-in-one (messaging, drive, videoconference, annotations,...), all encrypted, all private. Very easy to use, elegant design. Created by Executives for Executives, Decision-Makers, Board Members and ExComs to share highly confidential information, inside and outside an organisation, anywhere in the world. SHAREKEY is particularly well-suited for Private Workspace, Cyber Crisis Management, and Confidential AI.

## CONTACT

Hervé Blanc  
Founder & CEO  
[herve.blanc@sharekey.com](mailto:herve.blanc@sharekey.com)





## LOOKING FOR

RETAILERS  
INVESTORS

CUSTOMERS  
PARTNERS

## FUNDING

SERIES B

## PRODUCT DESCRIPTION

If we want to get the energy transition done, we need to transform the infrastructure and hardware in our cities. While heat pumps and district heating networks are booming, thermal energy storage systems gain worldwide popularity and importance. Legacy technology is often too bulky and insufficient in terms of capacity. This is why Cowa developed the most compact, modular and performant storage system to deliver up to 4 times more storage capacity on minimal space requirements. Thanks to our world-leading technology, we set new standards in the heating industry.

## CONTACT

Sarah Lüönd  
[sarah.lueoend@cowa-ts.com](mailto:sarah.lueoend@cowa-ts.com)





## LOOKING FOR

CUSTOMERS  
PARTNERS  
INVESTORS

## FUNDING

SERIES A

## PRODUCT DESCRIPTION

Droople enables smart water management with an all-in-one IoT and AI-powered Water Intelligence Platform. By digitizing over 100 billion offline assets—from toilets to treatment systems—we help reduce maintenance, cut consumable costs, and minimize water-energy waste. Our platform empowers businesses with real-time insights to optimize resources, extend asset life, and accelerate sustainability.

## CONTACT

Dominique Buisson  
Sales Director France  
[dominique.buisson@droople.com](mailto:dominique.buisson@droople.com)





---

## LOOKING FOR

INVESTORS  
CUSTOMERS  
PARTNERS

## FUNDING

SERIES A

---

## PRODUCT DESCRIPTION

Enerdrape commercializes the world's first prefabricated, non-invasive geothermal panels that transform underground structures—such as parking garages and tunnels—into renewable energy sources. Easy to install without drilling, these panels supply sustainable heating and cooling to buildings, enabling CO<sub>2</sub> savings and supporting the decarbonization of cities.

---

## CONTACT

Margaux Peltier  
CEO - Co-Founder  
[margaux@enerdrape.com](mailto:margaux@enerdrape.com)





# GREEN-Y

— WE SHIFT ENERGY —



## LOOKING FOR

INVESTORS  
CUSTOMERS

PARTNERS  
RETAILERS

## FUNDING

SEED  
SERIES A

## PRODUCT DESCRIPTION

We reduce energy costs for industrial clients with our next-generation air compressors - up to 20% more efficient than conventional systems. Using a patented technology with water as lubricant, we ensure highest air purity even for demanding sectors like food, pharma, semiconductors, and chemicals. Swiss-engineered for precision and reliability, our technology also powers a unique compressed air energy storage system, providing emission-free electricity, heat, and cooling from a single device.

## CONTACT

Peter Fritzen  
Co-Founder & CFO  
[peterf@green-y.ch](mailto:peterf@green-y.ch)





## LOOKING FOR

**PARTNERS  
CUSTOMERS**

## FUNDING

**SERIES A**

## PRODUCT DESCRIPTION

**Medusoil: Nature-Inspired Innovation for a Resilient Future**

At Medusoil, we are redefining ground engineering through biocementation, harnessing the power of nature to build smarter, greener infrastructure. Our breakthrough solutions use biomineralization and biopolymerization to transform soils into durable, resilient materials—without relying on traditional, carbon-intensive cement or lime.

From stabilizing foundations to restoring ecosystems, our technology offers a sustainable and low-carbon alternative that drastically reduces CO<sub>2</sub> emissions and environmental impact. Designed for the challenges of tomorrow, Medusoil is where cutting-edge science meets regenerative engineering.

## CONTACT

Nicolas Hermant  
Technical Sales Executive  
[nicolas@medusoil.com](mailto:nicolas@medusoil.com)





---

LOOKING FOR  
CUSTOMERS

FUNDING  
SEED

---

## PRODUCT DESCRIPTION

Our Metal-Organic-Frameworks (MOFs) allow low-cost, large-scale, highly efficient, and environmentally friendly point-source CO<sub>2</sub> capture in energy production and industrial processes. Our technology requires 2-3x less energy per ton of CO<sub>2</sub> than the state-of-the-art technology (amine scrubbing).

---

## CONTACT

Timo Steitz  
Co-Founder & Strategic Business Development  
[timo.steitz@novomof.com](mailto:timo.steitz@novomof.com)







# Perovskia



## LOOKING FOR

INVESTORS  
PARTNERS  
CUSTOMERS

## FUNDING

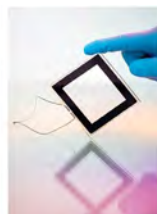
SEED

## PRODUCT DESCRIPTION

Tailor made Photovoltaic Energy Harvester based on perovskite semiconductor allowing for highly efficient ambient light collection. The photovoltaic cells come in an industrial black appearance, and they may be manufactured in customized sizes (max up to 150x150mm).

## CONTACT

Jessica Girard  
Production lead  
[jessica.girard@perovskia.solar](mailto:jessica.girard@perovskia.solar)





## LOOKING FOR

INVESTORS  
CUSTOMERS  
PARTNERS

## FUNDING

SEED

## PRODUCT DESCRIPTION

Do you want to heat products such as car interiors, clothing, shoes or machine parts?

Use qCella's innovative reshaped heat tech. Our heating mats can be cut into almost any shape and size and are integrated into your products in an easy and customizable way. The mats are so thin, light, and flexible, you barely feel them, and they heat surfaces evenly, resulting in more energy efficient heating.

## CONTACT

Murielle Schreck  
CEO & Co-Founder  
[murielle@qcella.com](mailto:murielle@qcella.com)





## LOOKING FOR

INVESTORS  
CUSTOMERS  
PRESS ATTENTION

## FUNDING

SEED

## PRODUCT DESCRIPTION

Digital classrooms everywhere, without internet or power. The Beekee Box is a can-sized, portable device that enables up to 40 learners to connect using their own smartphones or tablets and access rich educational content without needing internet or power. Winners ex-aequo with the MIT of the 2050NOW La Maison Grand Prize.

## CONTACT

Jacques Bøgh  
COO and CFO  
[jacques.bogh@beekee.ch](mailto:jacques.bogh@beekee.ch)





## LOOKING FOR

PARTNERS  
CUSTOMERS

## FUNDING

SEED

## PRODUCT DESCRIPTION

Innopearl reimagines innovation partnering, driving speed, efficiency and business impact for game-changers.

Innopearl streamlines open innovation and venturing prioritisation, scouting, and decision-making, all in one next-gen platform.

With powerful tools, dynamic innovator insights, seamless cross-functional engagement, and expert support, it unlocks scalable opportunities for growth, sustainability, and productivity.

## CONTACT

Olga Guerous  
CEO

[olga.guerous@innopearl.ch](mailto:olga.guerous@innopearl.ch)



# AlveoliX

In-vitro models inspired by nature



LOOKING FOR  
CUSTOMERS

FUNDING

## PRODUCT DESCRIPTION

Our technology allow to reproduce all organs in vitro, including the associated mechanical forces such as the breathing or peristaltic motion. It is suitable for a wide range of applications including drug safety and efficacy testing, inhalation toxicology assessment and answering fundamental research questions. It is a useful tool to improve preclinical decision making, accelerating drug development and reducing or even replacing animal models.

## CONTACT

Ferdinand Ativon  
Head of Sales  
[ferdinand.ativon@alveolix.com](mailto:ferdinand.ativon@alveolix.com)





---

## LOOKING FOR

INVESTORS  
CUSTOMERS  
PARTNERS

## FUNDING

PRE-SEED  
SEED

---

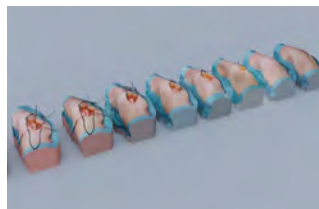
## PRODUCT DESCRIPTION

Augmedi is transforming medical education: With photorealistic 3D models and an AI-powered learning platform, Augmedi replaces traditional anatomy and surgical training with an intelligent, adaptive learning experience – anytime, anywhere, and for all levels. Our software personalizes content in real time, maximizes learning outcomes, and democratizes access to high-quality medical education.

---

## CONTACT

Thierry Schnidrig  
CFO & Co-Founder  
[thierry.schnidrig@augmedi.com](mailto:thierry.schnidrig@augmedi.com)





---

## LOOKING FOR

INVESTORS  
CUSTOMERS  
PARTNERS

## FUNDING

SEED

---

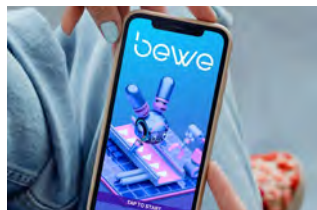
## PRODUCT DESCRIPTION

Neuria recalibrates the brain reward system via neuroscience-based cognitive training in immersive mobile games. Validated motor tasks reduce cravings and consumption by disrupting automatic reward responses. Proven in RCTs (500+ participants), it cuts food intake by 25% and cravings by 20%. Patented, scalable, and 13x cheaper than GLP-1, it reshapes obesity.

---

## CONTACT

Frederik Plourde  
CEO & Co-founder  
[frederik@bewe.com](mailto:frederik@bewe.com)



# emovocare



## LOOKING FOR

INVESTORS  
PARTNERS  
CUSTOMERS

## FUNDING

SEED

## PRODUCT DESCRIPTION

Emovo develops a neural robotic exoskeleton for people with hand motor impairments (for example stroke).

The 1st product is a comfortable and simple-to-use medical device for therapy in clinical and home settings. Next developments will combine neural control and a companion app, for connected therapy at home.

Our vision is to create systems for “therapy through living”: assist in daily life to increase motivation, meaningfulness, and dose of therapy - for improved clinical recovery and quality of life.

## CONTACT

Luca Randazzo  
CEO

[luca@emovocare.com](mailto:luca@emovocare.com)





# Leg&airy

Orthopedic Wonders.



## LOOKING FOR

INVESTORS  
TALENTS

PARTNERS  
CUSTOMERS

## FUNDING

SEED

## PRODUCT DESCRIPTION

Leg&airy OrthoSense. The future of orthotics is here. And it's intelligent.

OrthoSense is Leg&airy's breakthrough platform that redefines how orthotics are designed, delivered, and monitored. Combining pressure-sensing smart inlays with an AI-powered fitting engine, OrthoSense transforms a slow, manual process into a seamless, data-driven experience. Devices are tailored to each patient's anatomy and wear profile. Produced in days instead of months.

For the first time in orthotics, clinicians get real-time feedback, remote monitoring, and predictive insights that keep patients moving—faster, safer, and smarter. Built for speed. Designed for scale. Powered by precision.

## CONTACT

Faizan Mohammad  
Founder & CEO  
[faizan@legandairy.com](mailto:faizan@legandairy.com)





# MYNERVA



LOOKING FOR  
INVESTORS

FUNDING  
SEED

## PRODUCT DESCRIPTION

Leia is a non-invasive neuroprosthetic in the form of a smart sock that restores foot sensation and relieves pain in diabetic neuropathy patients. It combines real-time pressure sensing with targeted neurostimulation, using AI-based calibration for personalized therapy. Leia improves mobility, reduces fall risk, and offers a drug-free alternative to current treatments, with demonstrated clinical efficacy and seamless integration into daily life.

## CONTACT

Greta Preatoni  
CEO & co-founder  
[greta.preatoni@mynerva.com](mailto:greta.preatoni@mynerva.com)





# One scope



## LOOKING FOR

INVESTORS  
PARTNERS

## FUNDING

SEED

## PRODUCT DESCRIPTION

Pneumoscope – the “Shazam for lungs” – is a 3-in-1 smart stethoscope that brings lung diagnostics into the digital age. It combines a digital microphone, pulse oximeter, and thermometer in a portable device that analyzes respiratory sounds to detect diseases like asthma or pneumonia – making high-quality diagnosis accessible anywhere, from doctor’s office to patient’s home.

## CONTACT

Yannick Ormen  
Co-founder & COO  
[yannick.ormen@onescope.ch](mailto:yannick.ormen@onescope.ch)





# Precisia

AI to empower Care



## LOOKING FOR

INVESTORS  
RETAILERS  
CUSTOMERS

PARTNERS  
TALENTS

## FUNDING

SEED

## PRODUCT DESCRIPTION

The clinical activity forecast for your care unit – powered by AI.

Delivering transparent, actionable insights to anticipate workload, optimize care processes, and enhance patient safety in acute care units, by collecting and analyzing real-time data from multiple bedside sources.

## CONTACT

Anis Ghorbel  
CEO

[anisg@precisiacare.com](mailto:anisg@precisiacare.com)



# rea

## Diagnostics for Her



### LOOKING FOR

INVESTORS  
PARTNERS

### FUNDING

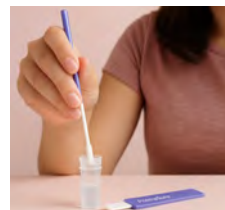
SEED

### PRODUCT DESCRIPTION

PremaSure™ is the first self-test that helps women assess the risk of preterm birth using just vaginal discharge—no speculum, no pain, and no delay. Most diagnostics in women's health are invasive, outdated, and designed without the patient in mind. We're changing that by developing simple, clinically trusted tools that women can use comfortably at home or at the hospital. Backed by major Swiss innovation grants and clinical partners, Rea Diagnostics is building a new standard of care—designed for women, trusted by doctors.

### CONTACT

Loulia Kasem  
Co-founder & CEO  
[contact@ReaDiagnostics.com](mailto:contact@ReaDiagnostics.com)





## LOOKING FOR

**CUSTOMERS  
INVESTORS**

## FUNDING

**SEED**

## PRODUCT DESCRIPTION

Resmonics develops solutions to prevent and manage respiratory diseases and infections. At the core of our products is a patented and CE-certified acoustic artificial intelligence that detects and analyzes respiratory symptoms. We offer two products: an AIOT sensor system that enables healthcare facilities to predict and detect emerging infections and monitor infection prevention measures, and a smartphone SDK/API to allow patients to monitor and assess their respiratory health.

## CONTACT

Peter Tinschert  
CEO & Co-Founder  
[peter@resmonics.ai](mailto:peter@resmonics.ai)





---

## LOOKING FOR

INVESTORS  
PARTNERS  
TALENTS

## FUNDING

SEED  
SERIES A

---

## PRODUCT DESCRIPTION

AnastoSEAL is a groundbreaking surgical technology combining a high-performance, bioresorbable sealant with a unique non-electronic sensing system. Designed to prevent and detect life-threatening post-operative digestive leaks, it protects suture and staple sites and alerts clinicians to impending leaks using standard imaging tools. This dual-function platform aims to redefine safety and outcomes in abdominal surgery.

---

## CONTACT

Alexandre Anthis  
CEO

[alexandre.althis@veltist.com](mailto:alexandre.althis@veltist.com)





---

## LOOKING FOR

INVESTORS  
CUSTOMERS  
PARTNERS

## FUNDING

PRE-SEED

---

## PRODUCT DESCRIPTION

Watchibia integrates advanced health-tracking sensors into a smart watch strap, allowing users to monitor pulse, sleep, stress, steps, and more—without changing their traditional watch. The patented integration fits seamlessly with luxury timepieces, combining innovation with craftsmanship to support a healthier, longer life.

---

## CONTACT

Olga Nijpels-Tishurova  
Founder & CEO  
[ont@watchibia.com](mailto:ont@watchibia.com)







---

## LOOKING FOR

## PARTNERS

---

## DESCRIPTION

CSEM is a Swiss technology innovation center developing advanced technologies with a high societal impact, which it then transfers to industry to strengthen the economy. The non-profit orientated, public-private organization is internationally recognized, and works to support the disruptive activities of companies in Switzerland and abroad. CSEM operates in the domains of precision manufacturing, digitalization, and sustainable energy. To accomplish its mission as a gateway between research and economy, CSEM's more than 600 employees from 46 countries collaborate with leading universities, scientific institutions, research institutes, and industrial partners. With its six sites, CSEM is active all over Switzerland.

---

## CONTACT

Beatriz Tur  
Marketing & Business Development  
[btu@csem.ch](mailto:btu@csem.ch)

---

# DAYONE



---

## LOOKING FOR

INVESTORS

PARTNERS

STARTUPS

TALENTS

---

## DESCRIPTION

DayOne is a leading launchpad for high potential ventures in Healthtech at the intersection of Pharma and technology in the Basel Area, at the heart of the European life sciences ecosystem. By providing a comprehensive support system and facilitating access to industry leaders, experienced mentors and a strong network of partners and investors in the life science sector, we help our portfolio companies overcome early-stage challenges, secure financing and scale their innovations.

---

## CONTACT

Pascal Clisson  
Business Growth & Strategic Partnership Lead  
[pascal.clisson@baselarea.swiss](mailto:pascal.clisson@baselarea.swiss)

---





# Future of Health Grant



## LOOKING FOR

INVESTORS

PARTNERS

STARTUPS

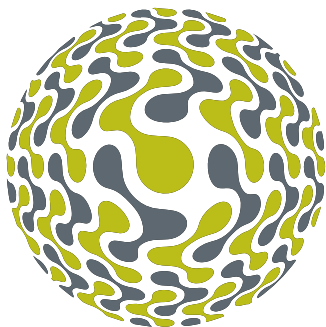
## DESCRIPTION

Powered by CSS and EPFL Innovation Park, the Future of Health Grant supports digital health startups with non-dilutive funding and hands-on operational support. Startups benefit from expert coaching, industry mentors, CxO as a Service, and leading healthcare partners to accelerate innovation and bring impactful solutions to the Swiss healthcare system.

## CONTACT

Mathilde Durvy  
Grant Manager, EPFL Innovation Park  
[durvy@epfl-innovationpark.ch](mailto:durvy@epfl-innovationpark.ch)





# GENOLIER INNOVATION HUB



## LOOKING FOR

INVESTORS

PARTNERS

## DESCRIPTION

Genolier Innovation Hub, located just 20 minutes from Geneva airport in the heart of the Swiss Health Valley, offers over 25,000 m<sup>2</sup> dedicated to medical innovation, where physicians, caregivers, researchers, scaleups, companies, specialized industries, hospitals, clinics and academic institutions meet and collaborate to accelerate progress and innovation in health care. Its mission, from laboratory to clinical application, is to ease the transition “from bench to bedside” by promoting translational research, the development of new solutions and educational opportunities, for the benefit of patients. With a focus on medtech, pharmaceuticals, digital technologies and biosciences, the Genolier Innovation Hub is a dynamic meeting place for international health care players. Its state-of-the-art 300-seat auditorium, featuring a 270-degree immersive screen, is a location for high-level conferences and keynote presentations.

## CONTACT

Anna Gräbner  
CEO

[ag@genolierinnovation.com](mailto:ag@genolierinnovation.com)





# SWITZERLAND INNOVATION

PARK NETWORK WEST EPFL



---

## LOOKING FOR

INVESTORS

PARTNERS

---

## DESCRIPTION

Come and test your innovation potential within European major hotspots for innovation, through our tailor-made innovation soft landing program to discover the potential of academia in innovation, maximize impact of opportunities, and benefit from a vibrant & unique ecosystem.

---

## CONTACT

Giovanni Porcellana  
Deputy Director  
[giovanni.porcellana@epfl.ch](mailto:giovanni.porcellana@epfl.ch)





# Wyss Zurich

Translating  
Science into Life



## LOOKING FOR

INVESTORS

PARTNERS

CUSTOMERS

## DESCRIPTION

The Wyss Zurich Translational Center (Wyss Zurich) is a unique accelerator, embedded within ETH Zurich and the University of Zurich, that is dedicated to the emerging fields of regenerative medicine, robotics, and medical devices/bionics technologies. We unite world-leading experts to form multidisciplinary teams, pooling their knowledge and expertise.

## CONTACT

Madeleine Kägi  
Senior Product Development Professional  
[madeleine.kaegi@wysszurich.ch](mailto:madeleine.kaegi@wysszurich.ch)



## ABOUT SWISSTECH:

The swisstech campaign is a private-public initiative supported by Presence Switzerland, Innosuisse, Swissnex and Switzerland Global Enterprise. The campaign aims to raise Switzerland's profile as a world-leading innovative location for business and to increase the visibility of its deeptech and other state-of-the-art companies as well as of its research excellence abroad. To learn more, please visit: [www.swiss.tech](http://www.swiss.tech)

Follow #swisstech to discover the best Swiss Made technology at the most relevant global tech events. As an outstanding innovation and technology hub, Switzerland is an attractive location for investors and foreign companies.


Pavillon swisstech :  
**B38 Hall 1 Paris Expo – Porte de Versailles**

Contacts Media – Agency Pressario  
[swisstech@pressario.fr](mailto:swisstech@pressario.fr) - 06 08 33 89 88

## PAVILION PARTNERS

### SWISSTECH PAVILION PRESENTED BY



 Schweizerische Eidgenossenschaft  
Confédération suisse  
Confederazione Svizzera  
Confederaziun svizra  
  
Ambassade de Suisse en France  
Swiss Business Hub France




 Schweizerische Eidgenossenschaft  
Confédération suisse  
Confederazione Svizzera  
Confederaziun svizra  
  
Swiss Confederation  
  
Innosuisse – Swiss Innovation Agency

### THEMATIC PARTNERS



### SWISSTECH CAMPAIGN POWERED BY



 Schweizerische Eidgenossenschaft  
Confédération suisse  
Confederazione Svizzera  
Confederaziun svizra  
  
Swiss Confederation  
  
Innosuisse – Swiss Innovation Agency



swisstech.

